

○ MUSIC  city COUNSELOR

THANK YOU FOR YOUR
PURCHASE!



Hey y'all, Laura here! I so appreciate when you please take a moment to leave a review on my resources on my TpT Store. Thanks for your support! Enjoy the resource!

♥ *laura oathout*

LET'S CONNECT!



For helpful ideas, engaging resources, and freebies, please check out my website and membership!

○ ♥ **WEBSITE:** www.musiccitycounselor.com

♥ **MEMBERSHIP:** www.counselorcollab.com

MATERIALS NEEDED:

- Printed materials
- 6 hook-and-loop fastener dots
- Crayons or markers
- Pencils
- Scissors
- Glue sticks

DIRECTIONS PAGE I:

This lesson will take approximately 45 minutes to teach.

Recommended Sequence:

- Review the PowerPoint or digital for Google Slides™ presentation. As you present each Super Social Worker Badge, attach that cut-out badge to the Super Social Worker .
- Review (and display) the instructional posters with students.
- Choose a craft, worksheet, or coloring page to close the lesson.

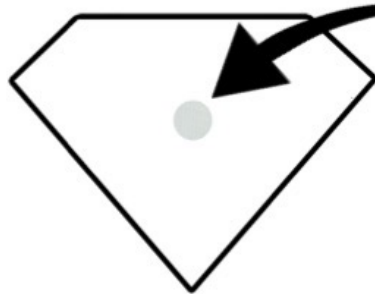
Super Social Worker & Badges Prep:

7 different options (for race, gender) for the Super Social Worker are included in full color and black/white. Please choose the one that looks most like you. Please cut out his/her face and body and glue the head to the body. 6 different badges are included in full color and black/white. Please print them and cut them out. Please place one side of a hook-and-loop fastener dot in the middle of the badge on the body of the Super Social Worker. Please place the other side of a hook-and-loop fastener dot on the back of each of the badges. This makes attaching the badges to the Super Social Worker easy and quick as you teach.

DIRECTIONS PAGE 2:



One side of the hook-and-loop fastener dot goes here



The other side of the hook-and-loop fastener dot goes on the back of each badge

PowerPoint Presentation & Badges:

Both a PowerPoint and digital for Google Slides™ presentation are included. This presentation teaches students how their school social worker is like a superhero. Just like superheroes have superpowers, school social workers do, too! We wear 6 different Super Social Worker Badges that each represent one of our Super Social Worker Powers:

helper, listener, kindness, solver, secret-keeper, and safety. The presentation teaches students about all 6 badges and the many ways that school social workers help students. As you teach each badge, show the cut-out badge to students and ask a volunteer to attach that badge to the body of the Super Social Worker. The presentation closes with a discussion question that asks students how their Super Social Worker can help them. Please ask students to turn and talk with a partner to discuss this question, then share out their answer with the class.

Posters:

8 posters are included. Please choose the poster with the Super School Social Worker that looks the most like you. Please use these posters in instruction and display them in your space.

DIRECTIONS PAGE 3:

Craft:

This cute craft encourages students to reflect on the 6 Super Social Worker Badges and the ways their school social worker can help them. Please choose the clipart Super Social Worker that looks most like you (4 options are included) and give it to students along with the writing page.

Please ask students to cut out the Super Social Worker and decorate him/her. Then, they can glue/him her to the top of the writing page as shown in the sample. Finally, students can write on the lines about which badges their Super Social Worker has and how he/she can help them.

These make for a cute hallway display or bulletin board!

Worksheets & Coloring Pages

Multiple options for worksheets and coloring pages are included to close the lesson. Please choose the ones that best fit the needs and abilities of your students.

Questions, comments, or suggestions? Please contact me any time at laura@musiccitycounselor.com. I'm here to help! :)

SAMPLE ACTIVITY

As you teach each badge, add it to the Super Social Worker's chest!



SAMPLE CRAFT



Name: Jessica Fuentes

MY SUPER SOCIAL WORKER

Which Super Social Worker Badges does your school social worker have? How can he/she use them to help you?

My Super Social Worker has 6 badges:

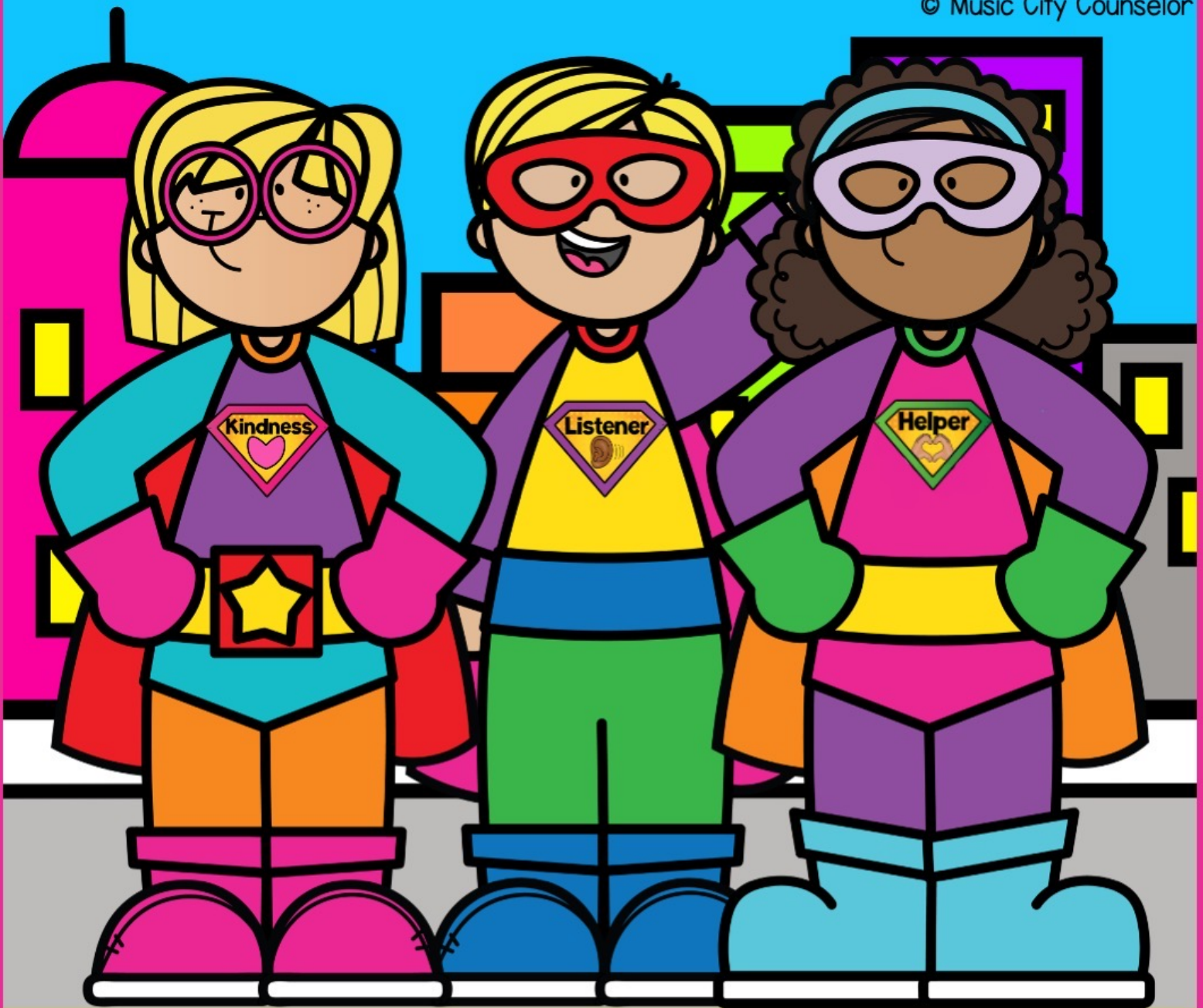
helper, kindness, listener, secret-

Keeper, solver, and safety. She helps

me make friends and solve problems.

She is my superhero!

POSTERS



**My School Social
Worker is a
SUPERHERO!**

SUPER Badges



SUPER Badges



SUPER Badges



SUPER Badges



SUPER Badges



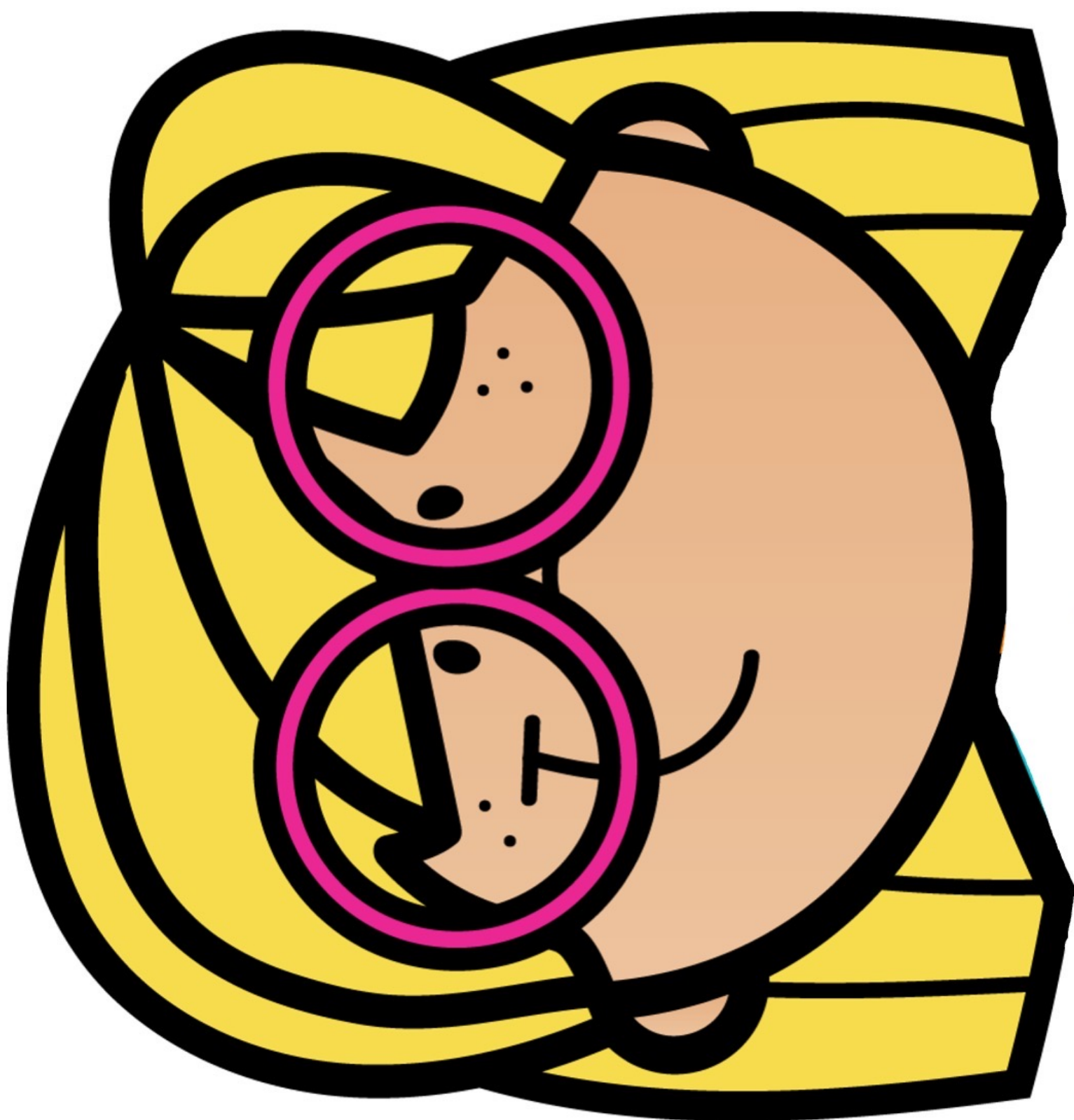
SUPER Badges



SUPER Badges



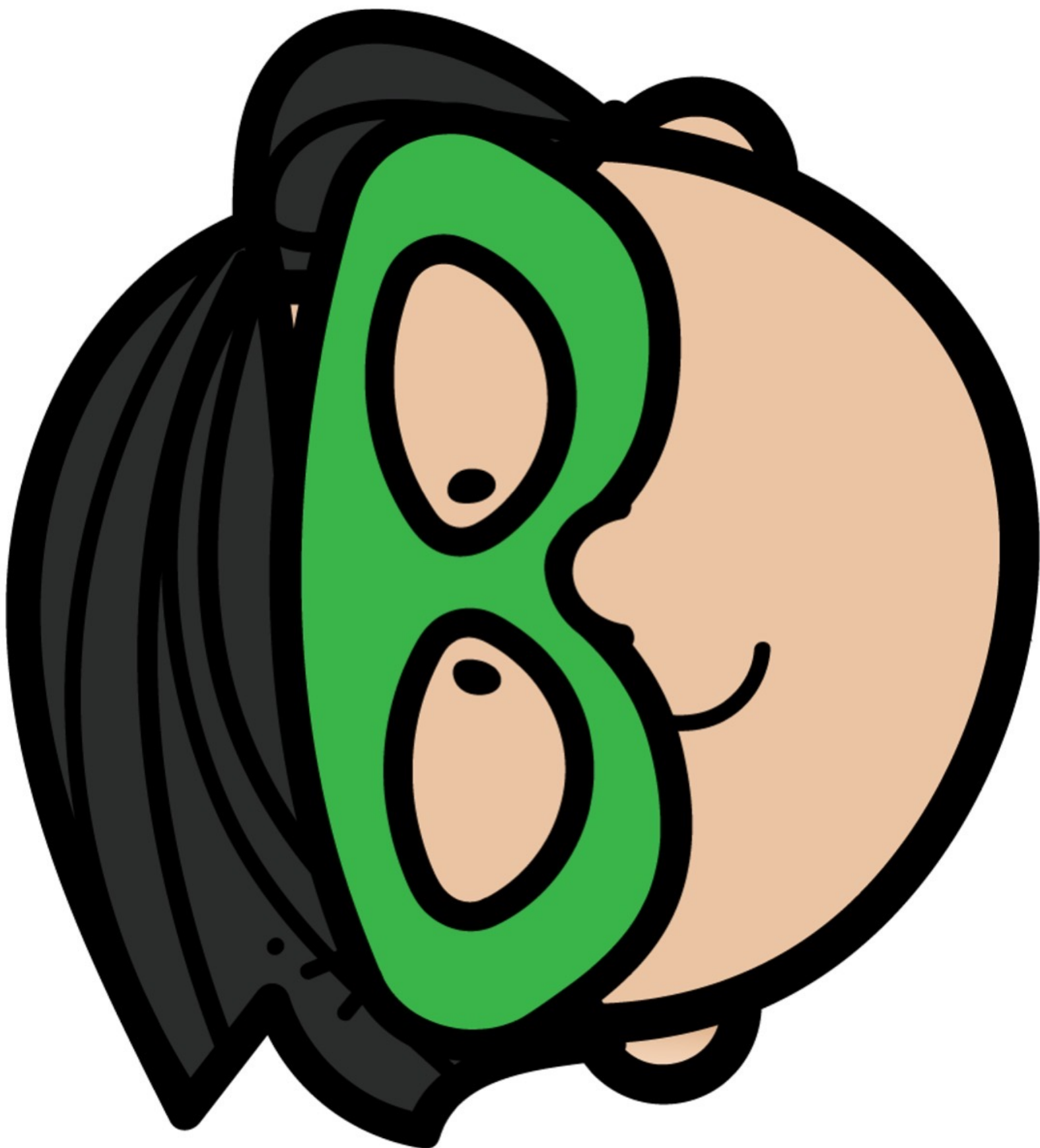
**SUPER SCHOOL
SOCIAL WORKER
ACTIVITY +
BADGES**

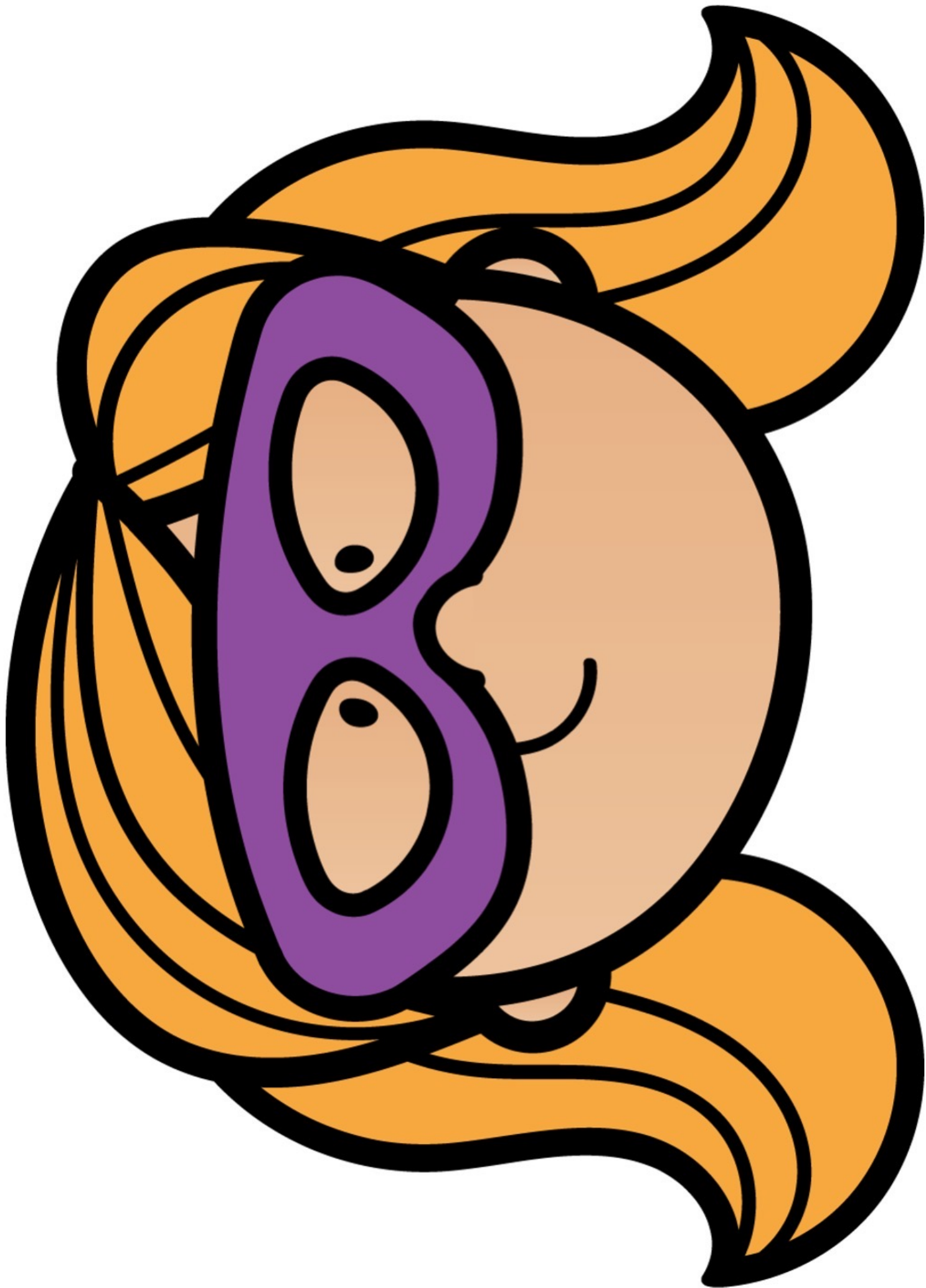


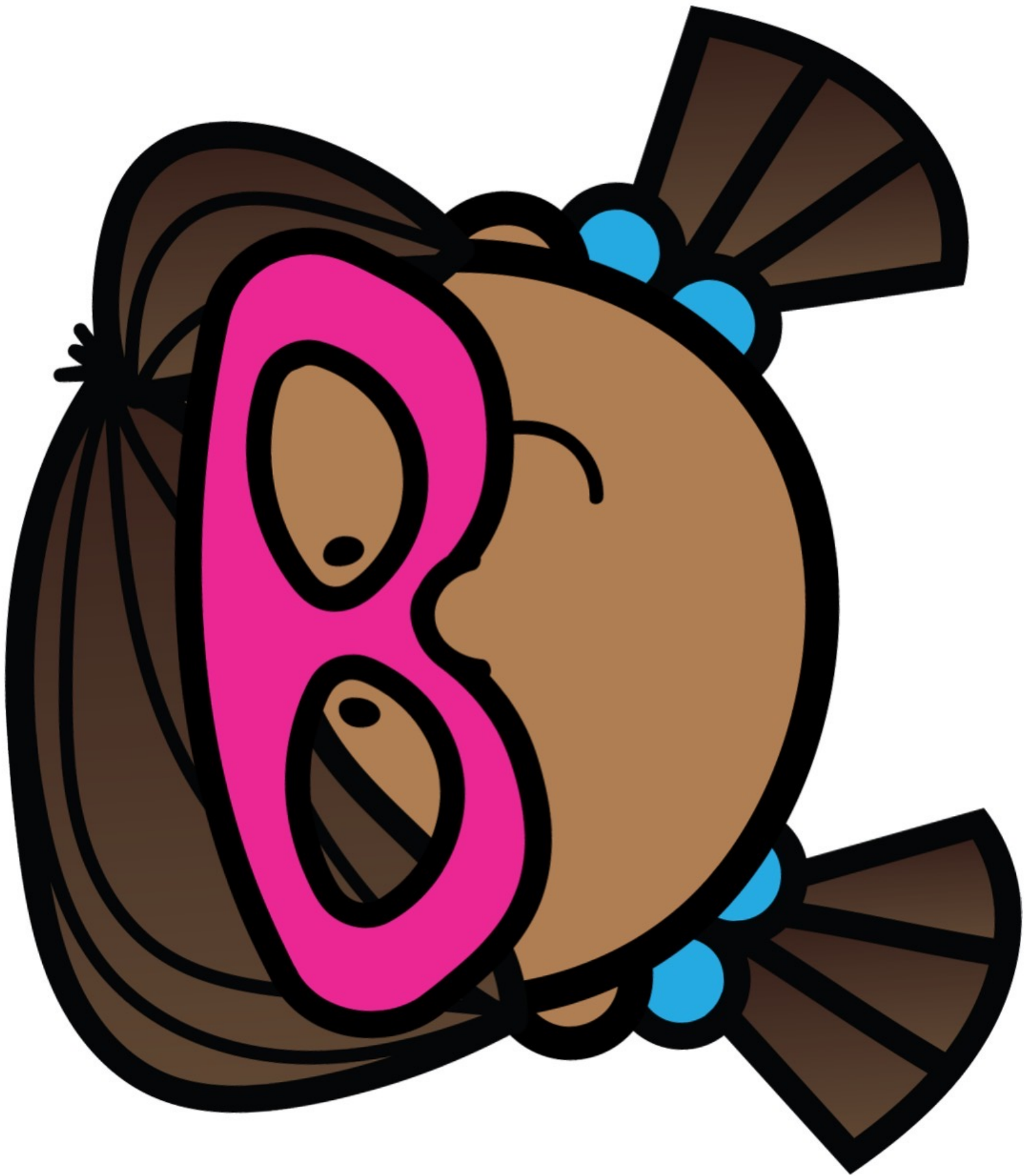














SUPER
Social Worker



SUPER
Social Worker



SUPER
Social
Worker







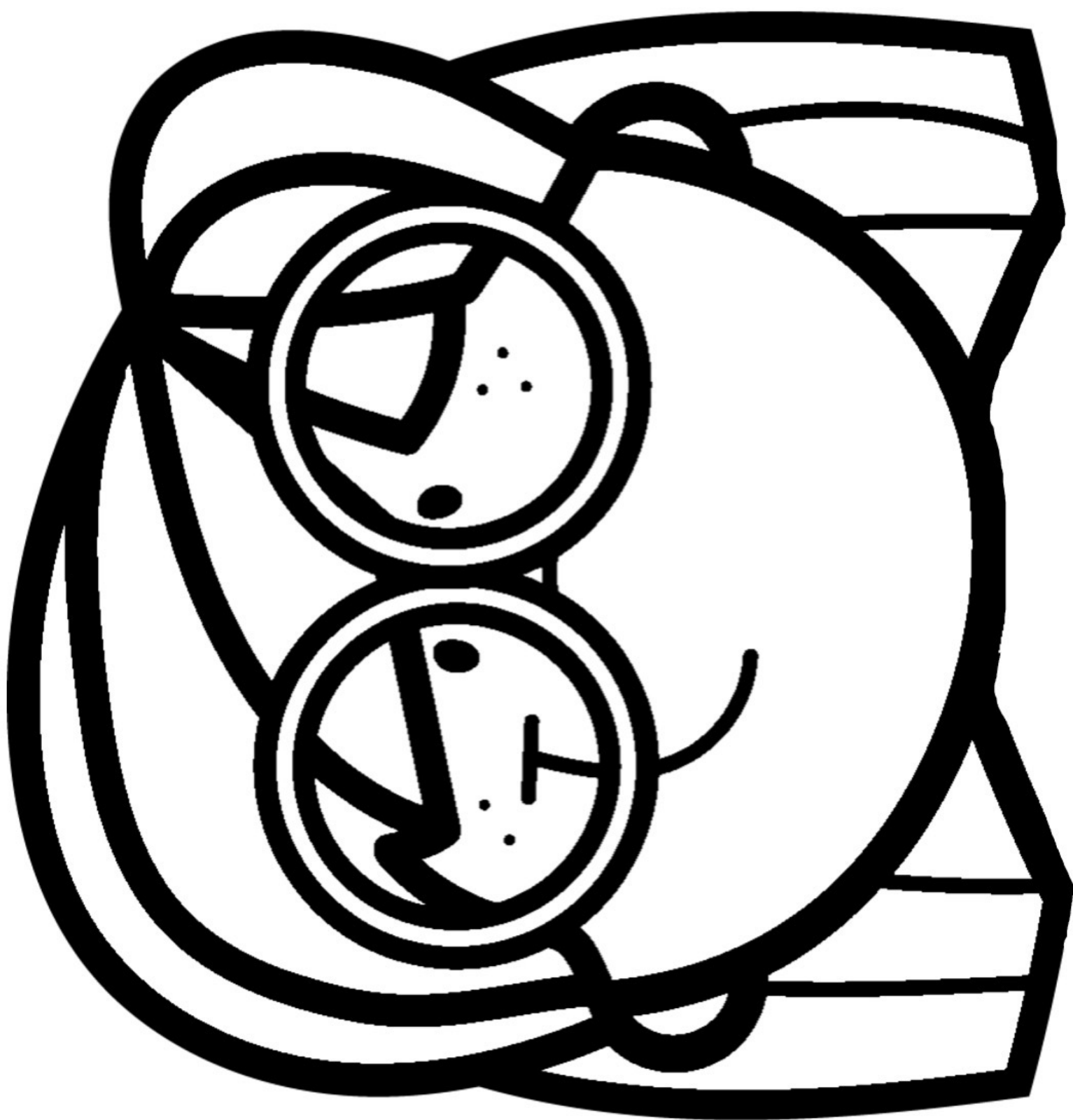


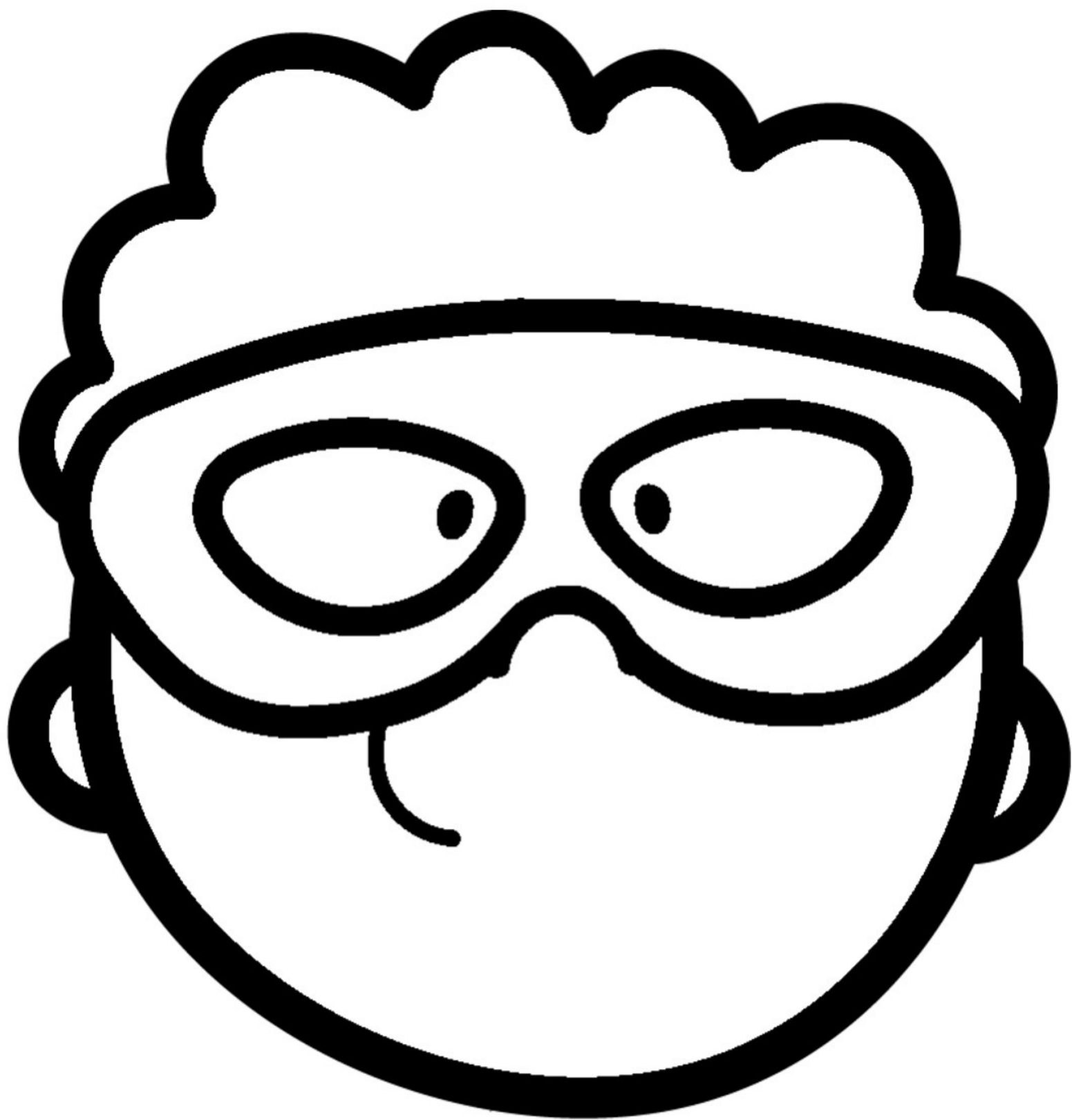


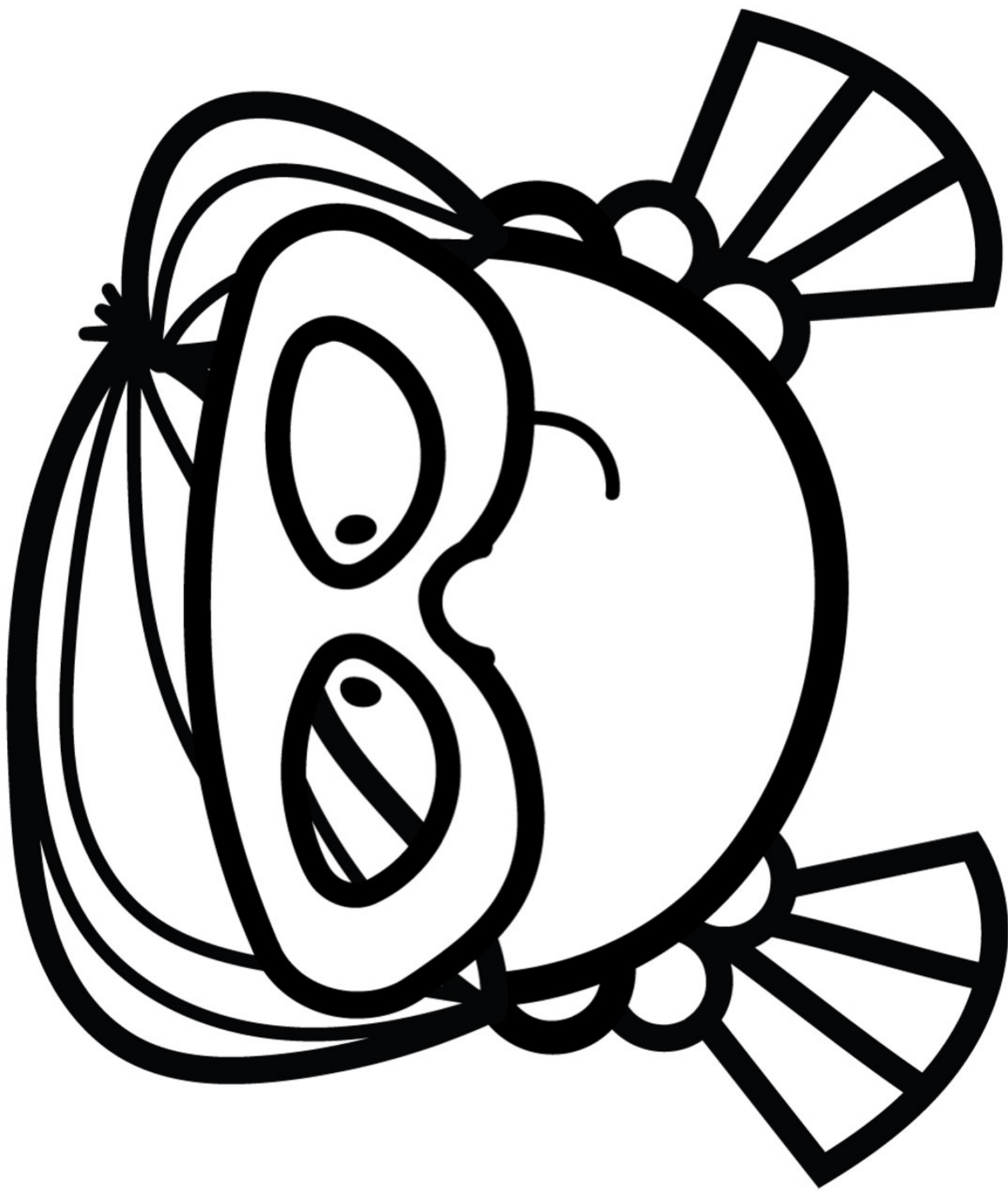
Helper

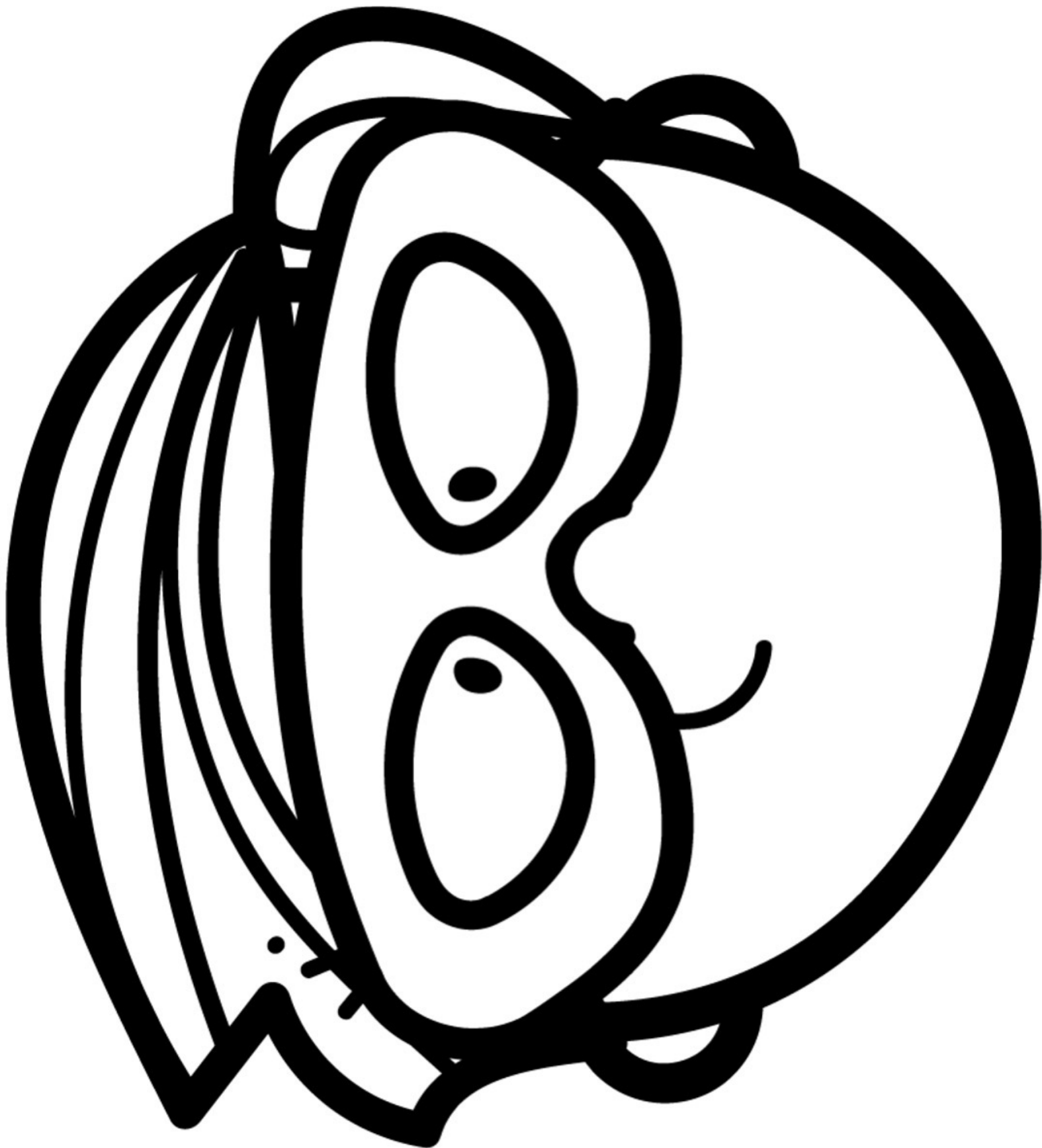


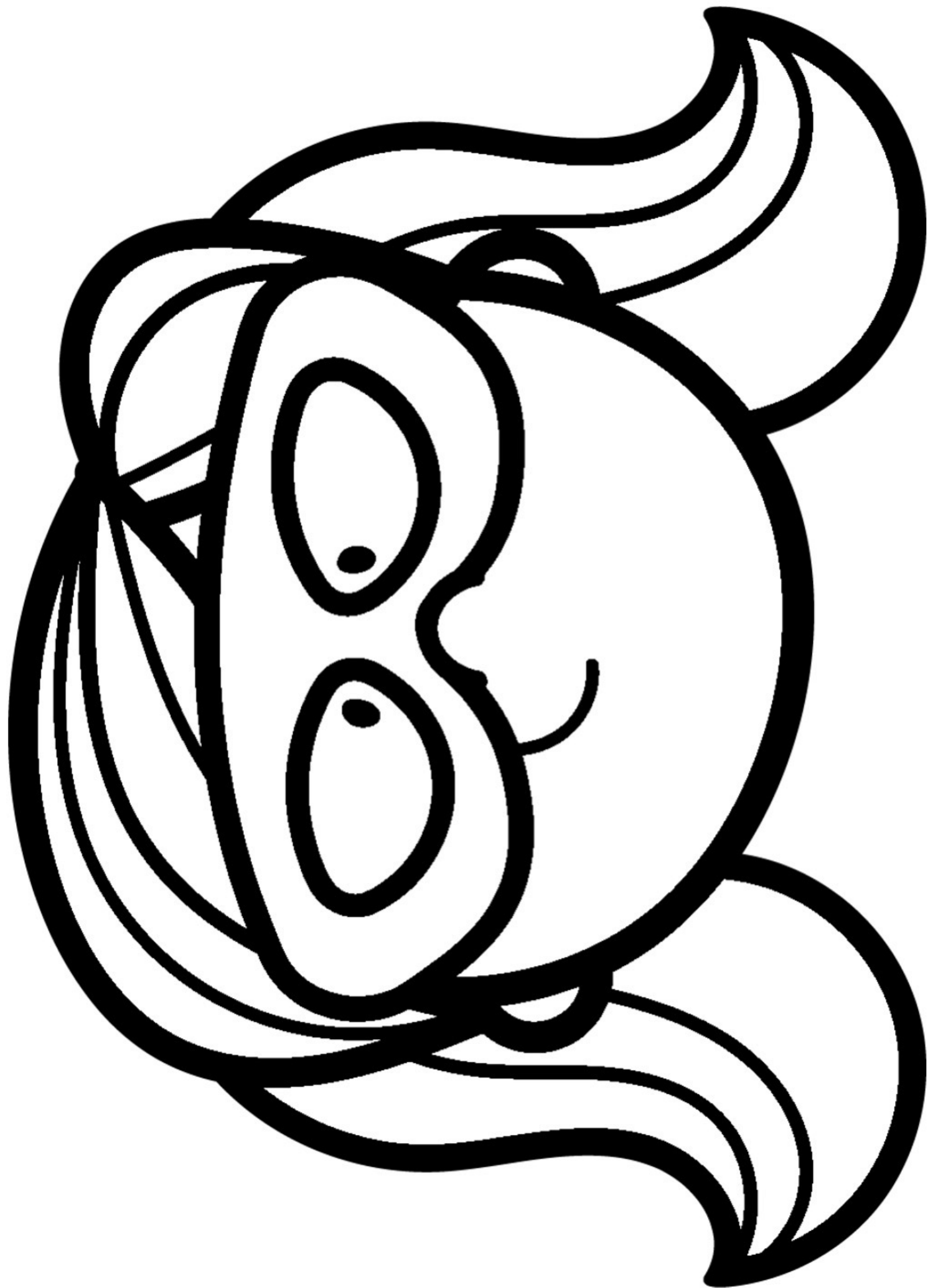
© Music City Counselor













SUPER
Social
Worker



**Secret
Keeper**



© Music City Counselor



Kindness



© Music City Counselor

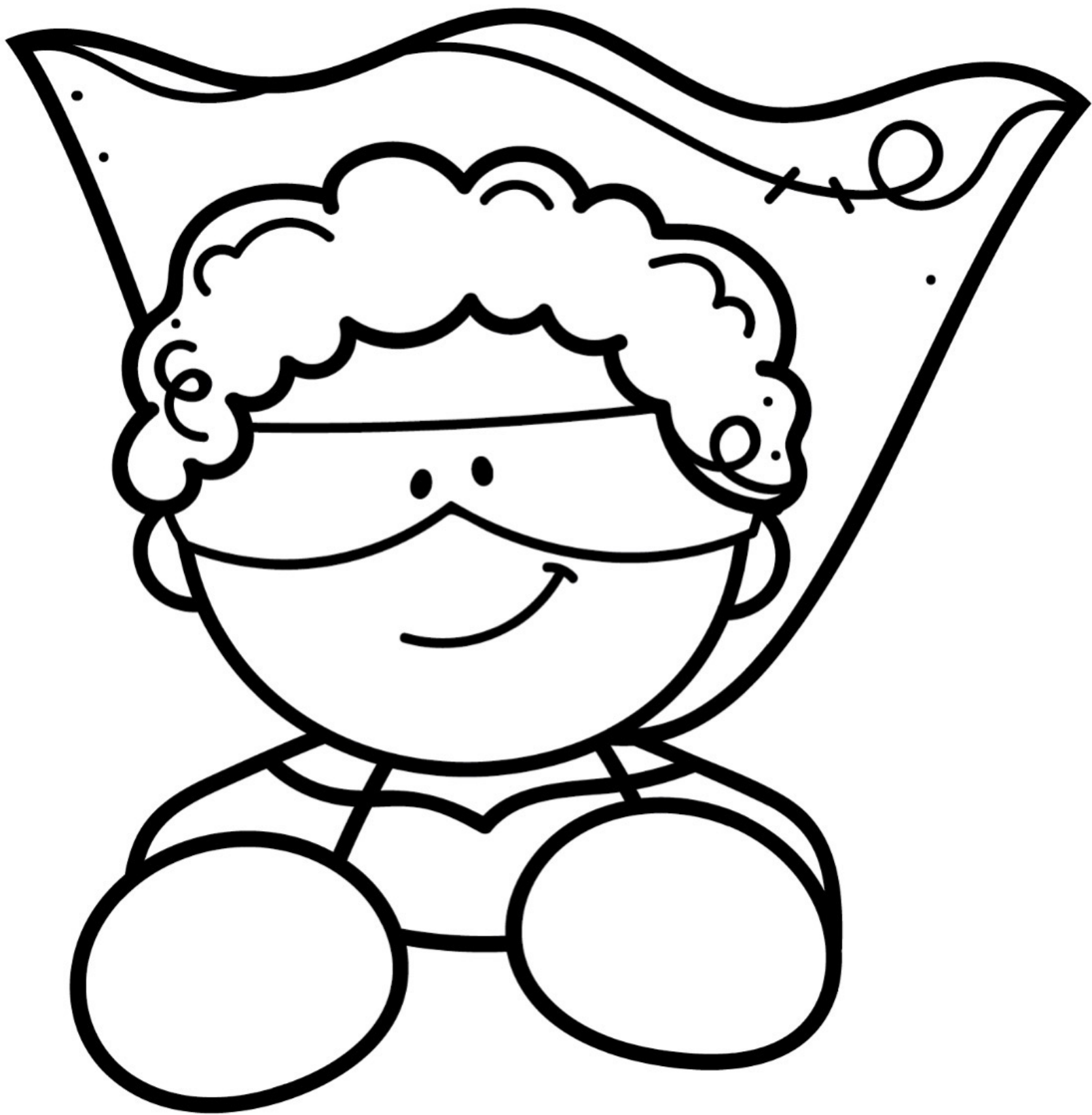


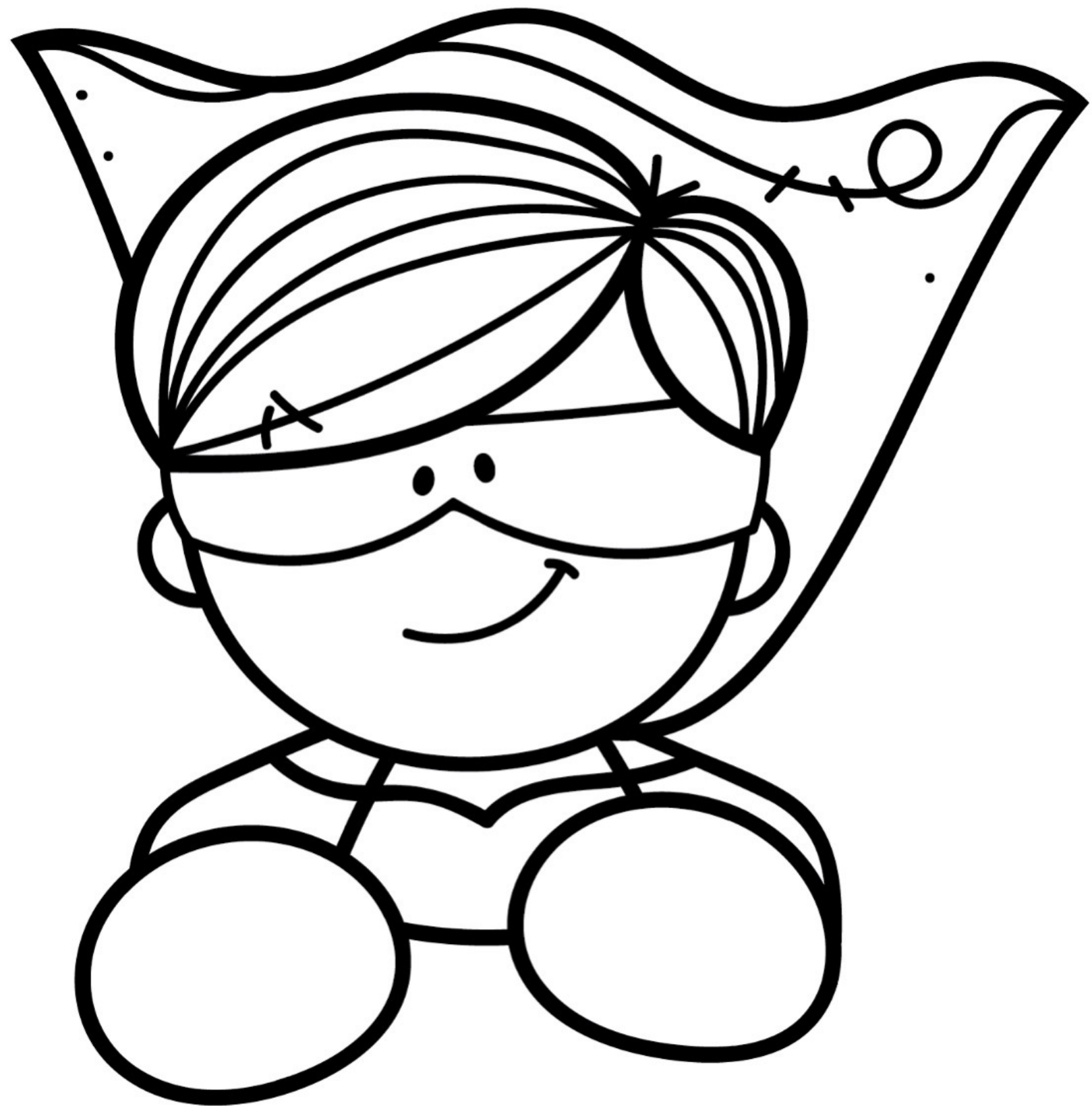
Helper

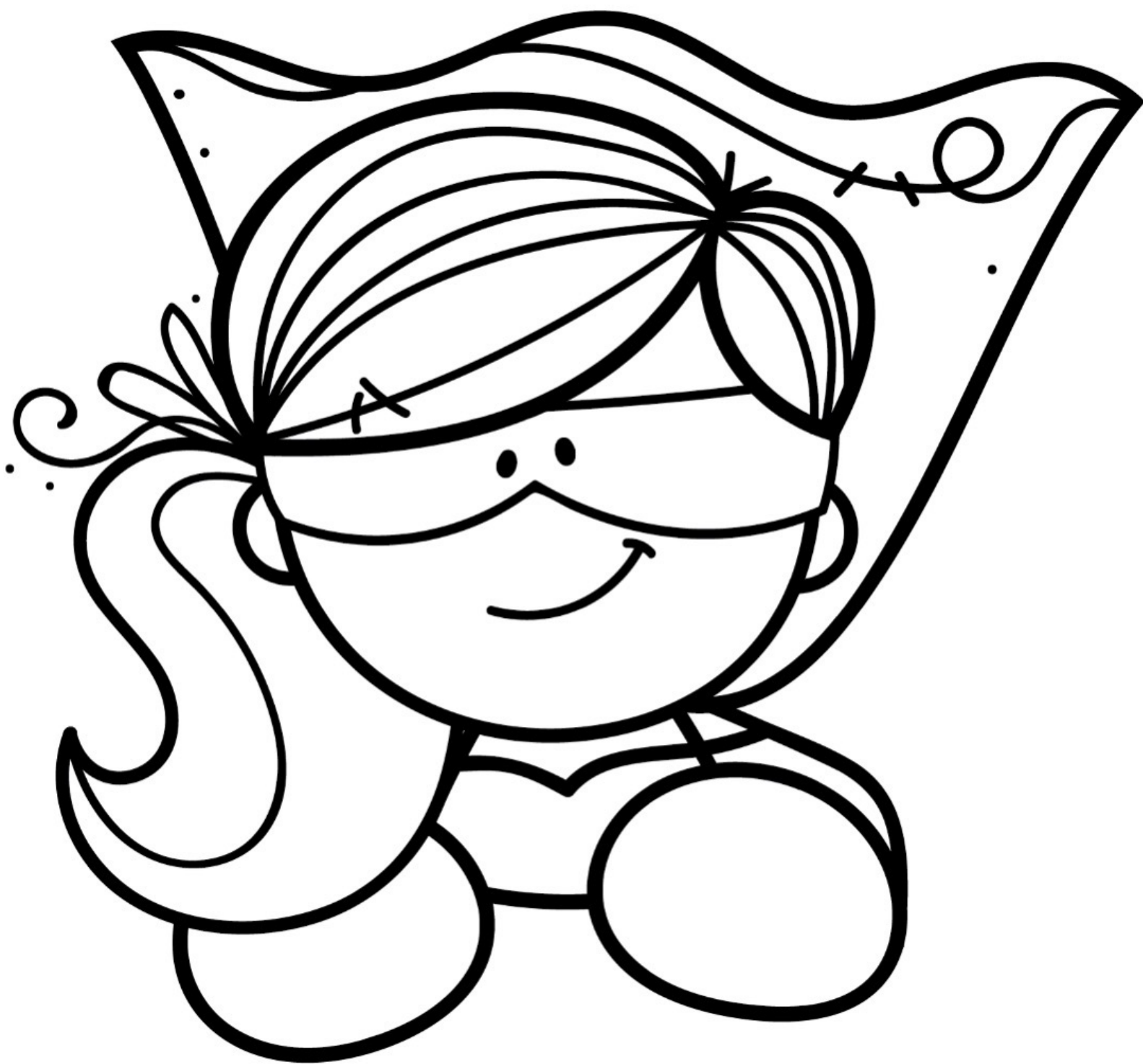


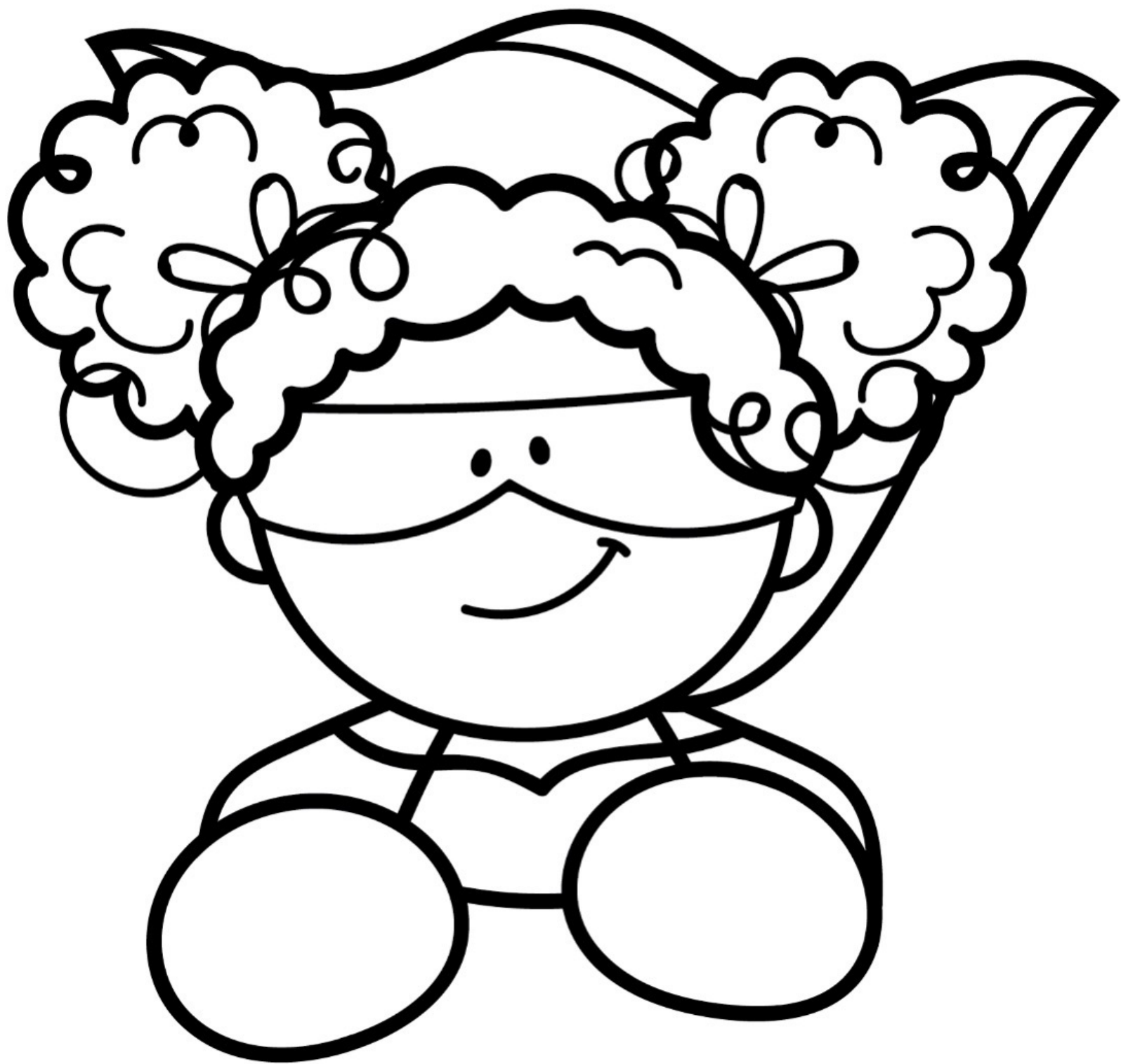
© Music City Counselor

CRAFT









Name: _____

MY SUPER SOCIAL WORKER

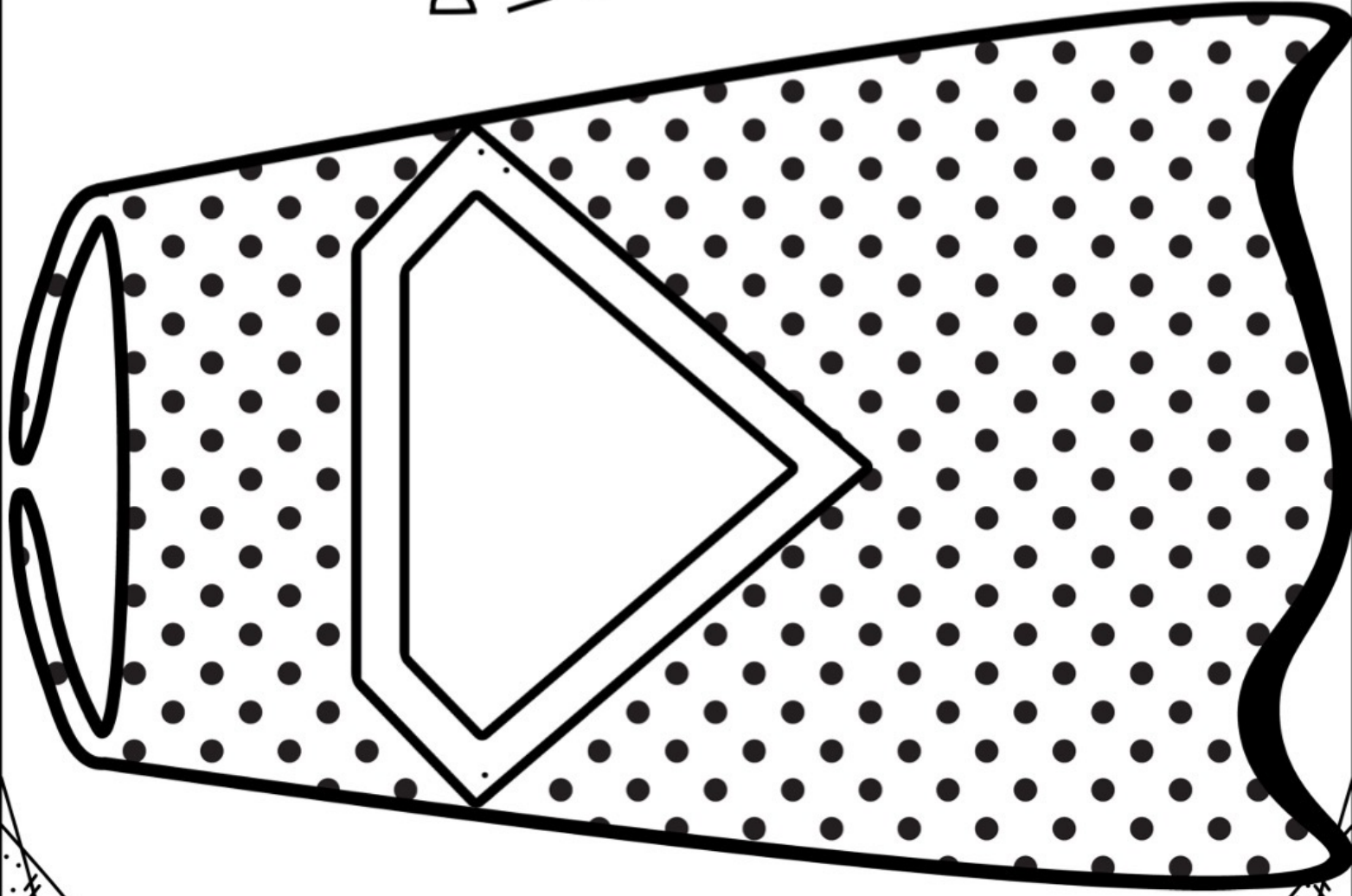
Which Super Social Worker Badges does your school social worker have? How can he/she use them to help you?

WORKSHEETS + COLORING PAGES

Name: _____

SUPER SOCIAL WORKER CAPE

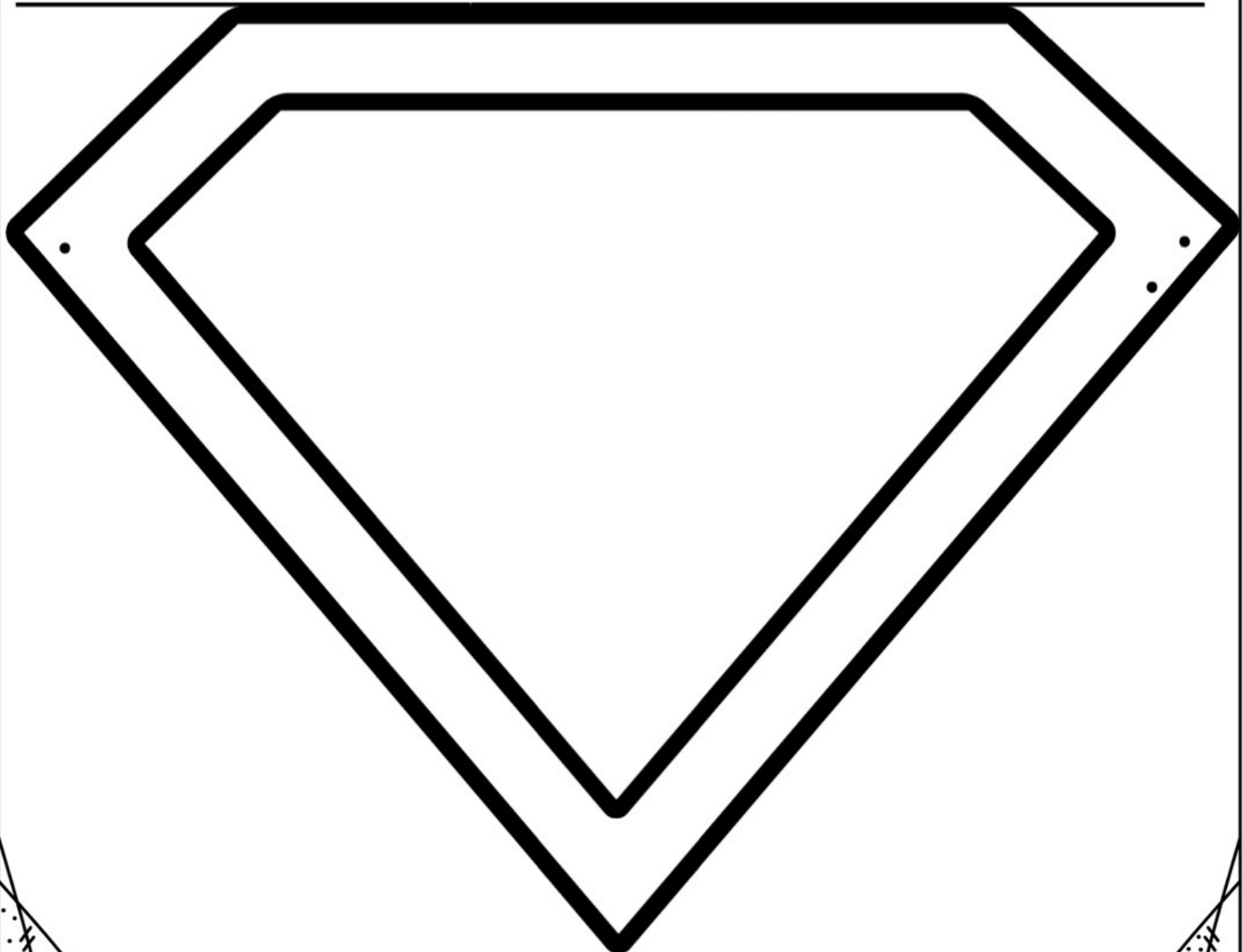
Decorate your own Super Social
Worker Cape. Write on the lines
how your Super Social Worker
can help you.



Name: _____

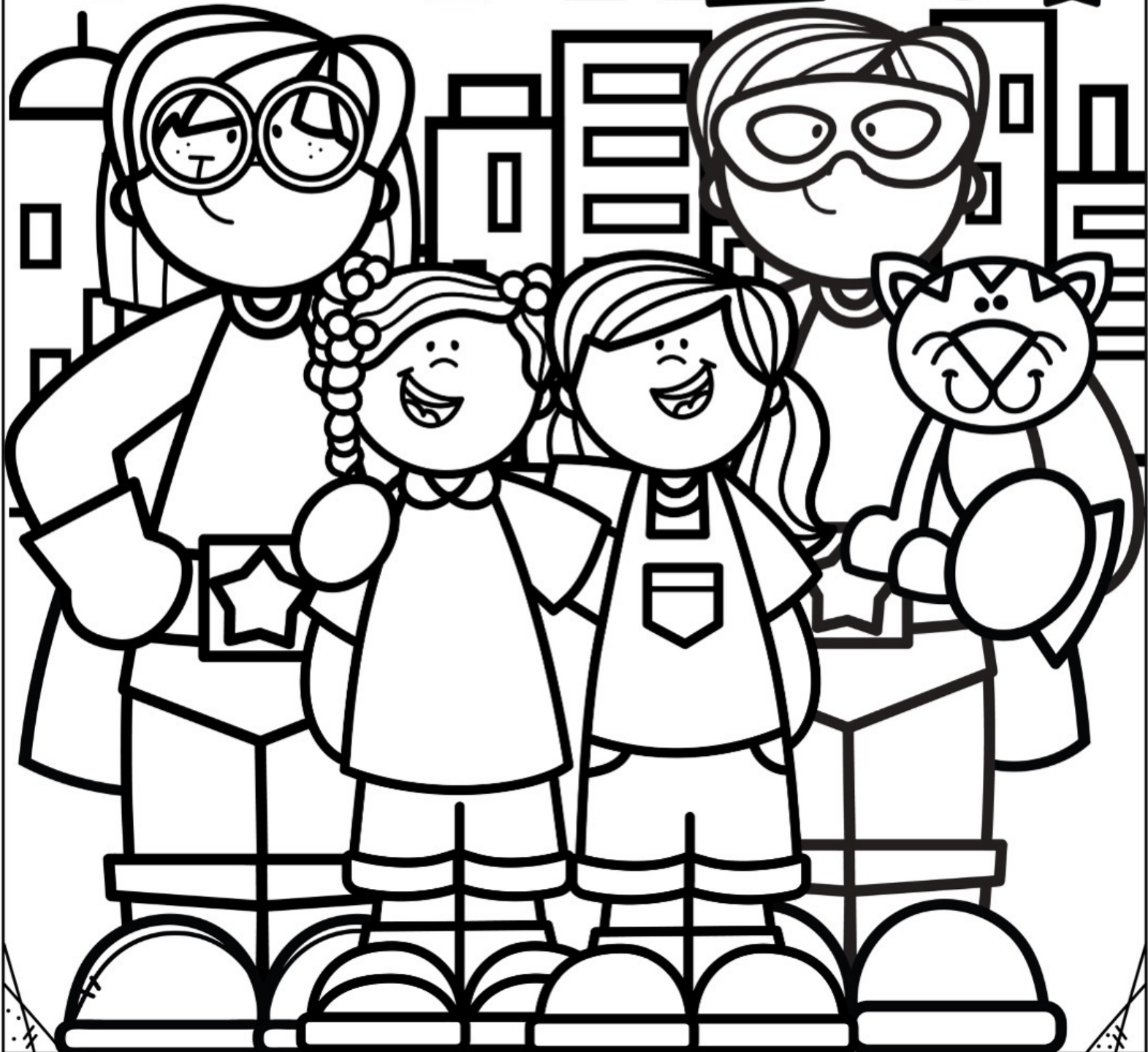
SUPER SOCIAL WORKER BADGE

Create your own Super Social Worker Badge.
Write on the lines how your Super Social Worker
can use this badge to help you.



Name: _____

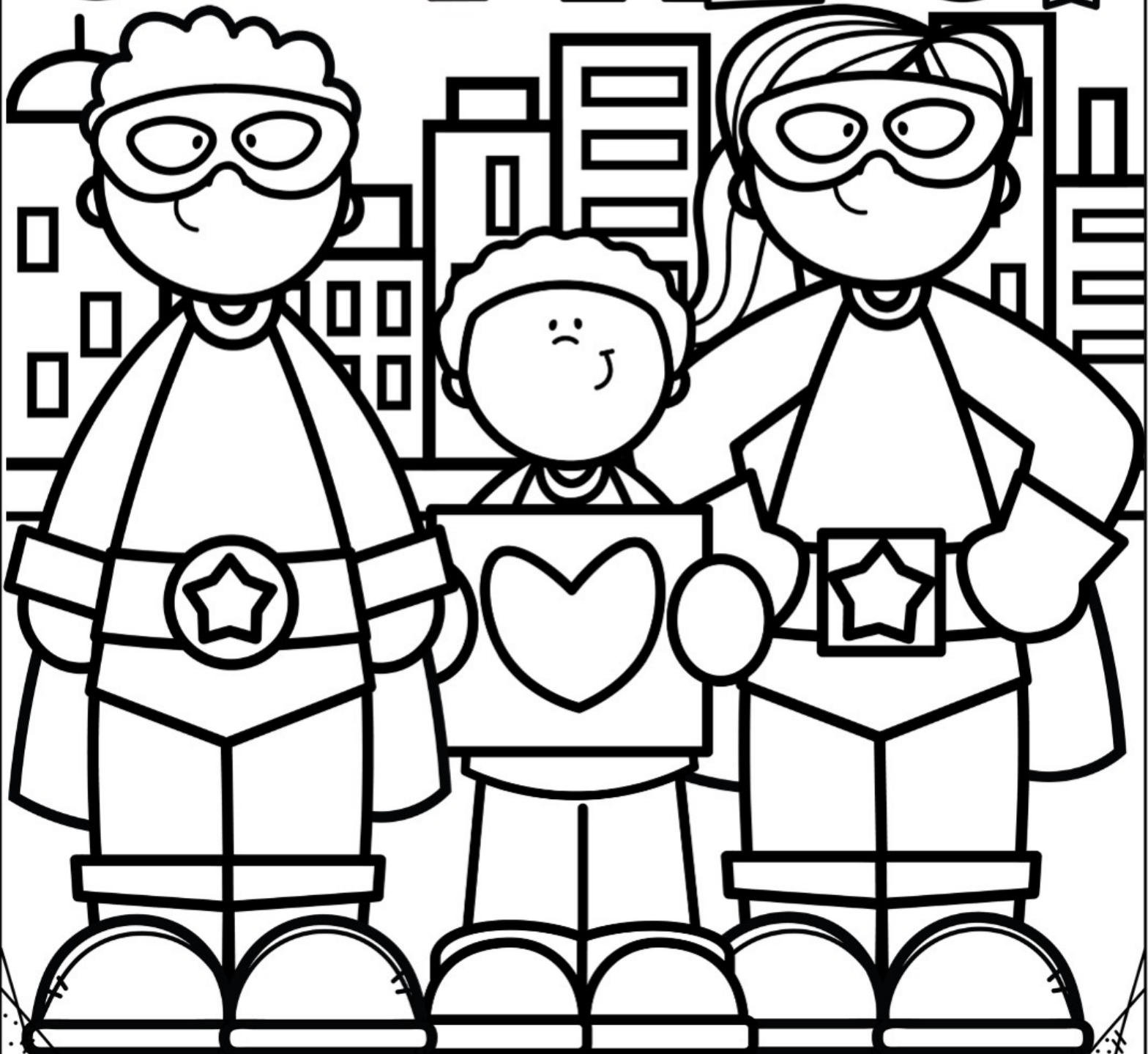
MY SOCIAL WORKER IS MY SUPERHERO!



Name: _____

© Music City Counselor

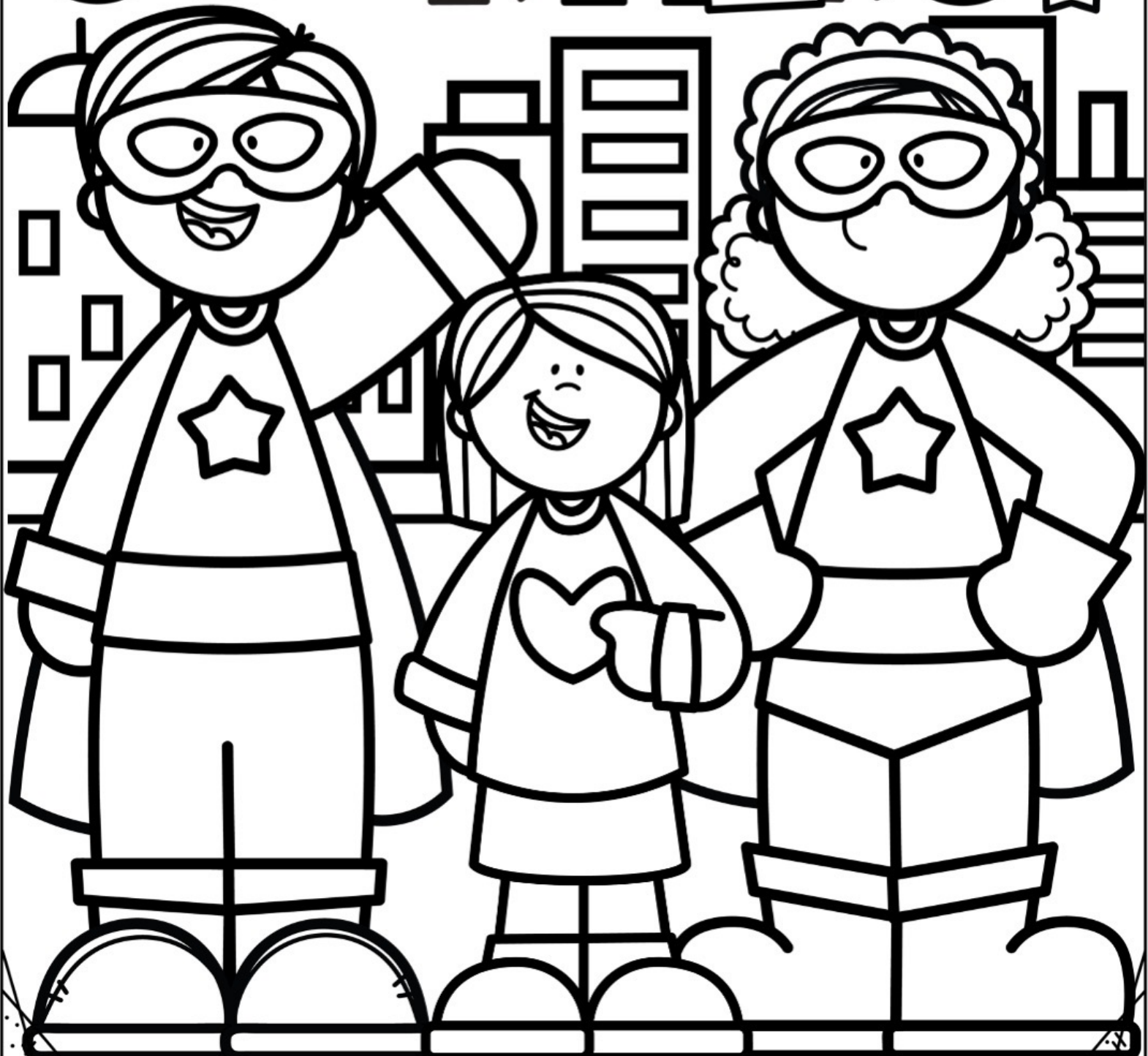
MY SOCIAL WORKER IS MY SUPERHERO!



Name: _____

© Music City Counselor

MY SOCIAL WORKER IS MY SUPERHERO!



○ TERMS OF USE:

- Make copies for the purchaser's classroom AND share copies with other educators within your school building
- Reference (without distribution) this product in blog posts, seminars, professional development workshops, or other such venues provided there is both credit given to myself as the author and a link back to my TpT store included in the post/presentation

• YOU MAY •

- Claim the work as your own, alter the files in any way, or remove/attempt to remove the copyright
- Share this product with educators outside of your school building
- Repackage, sell, or giveaway this product to others
- Offer to share this product anywhere on the internet as a download or copy

• YOU MAY NOT •



Please contact me any time at laura@musiccitycounselor.com with questions, suggestions, resource requests, or comments. I'm here to help and would love to hear from you!

♥ *laura oathout*

THIS RESOURCE WAS MADE POSSIBLE THANKS TO:

